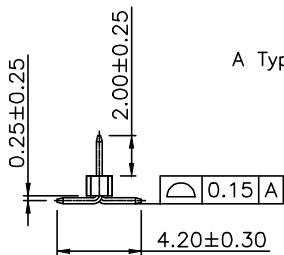
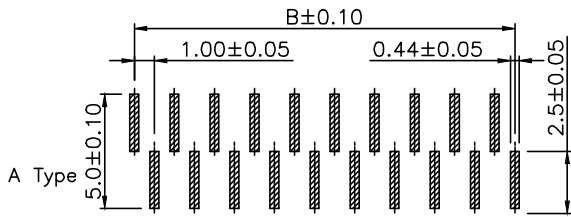
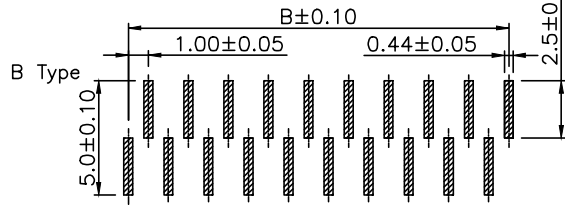
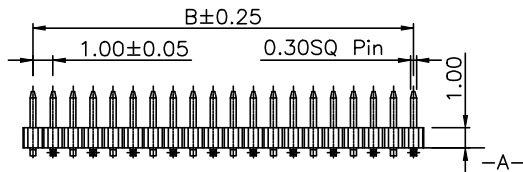
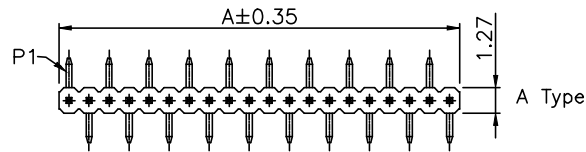
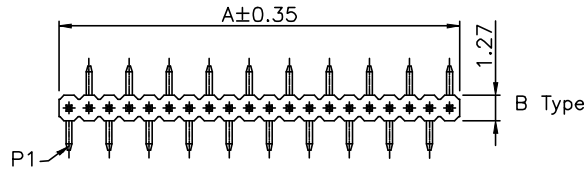


No.	A	B
1*02	2.0	1.0
1*03	3.0	2.0
1*04	4.0	3.0
1*05	5.0	4.0
1*06	6.0	5.0
1*07	7.0	6.0
1*08	8.0	7.0
1*09	9.0	8.0
1*10	10.0	9.0
1*11	11.0	10.0
1*12	12.0	11.0
1*13	13.0	12.0
1*14	14.0	13.0
1*15	15.0	14.0
1*16	16.0	15.0
1*17	17.0	16.0
1*18	18.0	17.0
1*19	19.0	18.0
1*20	20.0	19.0
1*21	21.0	20.0
1*22	22.0	21.0
1*23	23.0	22.0
1*24	24.0	23.0
1*25	25.0	24.0
1*26	26.0	25.0
1*27	27.0	26.0
1*28	28.0	27.0
1*29	29.0	28.0
1*30	30.0	29.0
1*31	31.0	30.0
1*32	32.0	31.0
1*33	33.0	32.0
1*34	34.0	33.0
1*35	35.0	34.0
1*36	36.0	35.0
1*37	37.0	36.0
1*38	38.0	37.0
1*39	39.0	38.0
1*40	40.0	39.0
1*41	41.0	40.0
1*42	42.0	41.0
1*43	43.0	42.0
1*44	44.0	43.0
1*45	45.0	44.0
1*46	46.0	45.0
1*47	47.0	46.0
1*48	48.0	47.0
1*49	49.0	48.0
1*50	50.0	49.0



Recommended PCB Layout

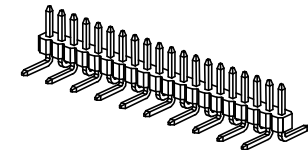
**APTOS Technology CONFIDENTIAL**  
 This document, and all information it contains, are the confidential, proprietary property of APTOS Technology. Disclosure, duplication or distribution of this document, or any information it contains, in whole or part, without prior written permission from APTOS Technology is strictly prohibited.

### SPECIFICATIONS

- Current Rating: 1 Amps
- Voltage Rating: 100V AC/DC
- Insulator Resistance: 500 Megohms min.
- Contact Resistance: 30 m ohms max.
- Dielectric withstanding: 500V AC
- Operating Temperature: -40°C~+105°C
- Contact Material: Brass
- Insulator Material: Nylon-6T, UL 94V-0
- Color: Black

SLRY-XXX-XX-020/042/X-FG  
 Number of Contacts | Type A or B | Contact Plating | High Temp RoHS Compliant | Pin Length/Width/Dim. X 2.0mm/4.2mm/0.25mm Min

Definition	Code
◎ Gold plated:	
flash VB	10μ" VE
3μ" VC	15μ" VF
5μ" VD	30μ" VJ



GENERAL TOLERANCE UNLESS OTHERWISE SPECIFIED	
XXX. ± X	.XX ± 0.15
XX. ± X	.XXX ± X
X. ± 0.30	X.' ± 5"
.X ± 0.20	.X' ± 3"
REV. A	DRAWN
DATE 10/25/10	CHECKED
SCALE As shown	APPROVED
UNIT mm	SIZE A4



10/25/10	SLRY Series 1.00mm SMT Pin Header
PRODUCT NO. SLRY-XXX-XX-020/025/X-FG	FILE NAME: SLRY LF APD.DWG